

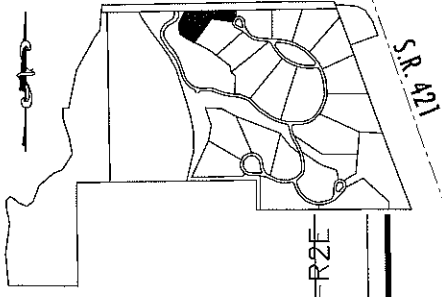
C.R. 550 S.

S.R. 421

LOST RUN FARM

LOT 16

ZIONSVILLE, IN



SEC. 36 T18N R2E

C.R. 550 SOUTH (TEMLIN ROAD)

588.78'

SOUND REDUCTION WALL

578.72'

5' N.A.E.

379.77'

386.450'

386.4750'E

281.40'

25' D.&L.M.A.E

20' S.S.E.

20' S.S.E.

20' S.S.E.

20' S.S.E.

20' S.S.E.

146.07'

25'

15' D.&S.E. & P.C.T.E. N00°58'32"W

50.00'

15' D.&S.E. & G.T.W.E.

15' P.C.T.E.

40' B.L.

20' S.S.E.

25' B.L.

7.5' D.E.

7.5' D.E.

7.5' D.E.

7.5' D.E.

7.5' D.E.

7.5' D.E.

7.5' D.E.

7.5' D.E.

7.5' D.E.

7.5' D.E.

7.5' D.E.

7.5' D.E.

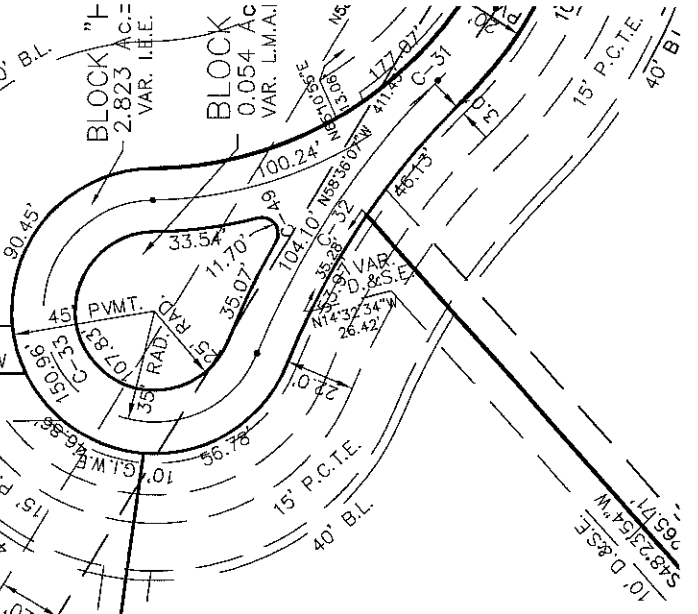
7.5' D.E.

16

1.224 AC.±
SIXTEEN LOST RUN LANE
ZIONSVILLE, IN 46077

17

1.213 AC.±
SEVENTEEN LOST RUN LANE
ZIONSVILLE, IN 46077



SCALE: 1" = 60'

PREPARED BY:



STOOPPELWERTH

ofc: 317.849.5935
 fax: 317.849.5942
 7955 East 106th Street
 Fishers, Indiana 46038-2505
 www.stooppelwerth.com

PICNIC PAVILION
FIVE LOST RUN LANE
ZIONSVILLE, IN 46077